

# Mireille Mosler Ltd.

## ALBRECHT FUCHS

### *Portraits*

February 8 – March 22, 2008

*John Baldessari, Los Angeles, 2004*  
21 by 17 inches (53.3 x 43.2 cm)  
C-print  
Edition 4/5



*Matthew Barney, Cologne I, 2002*  
21 by 17 inches (53.3 x 43.2 cm)  
C-print  
Edition 5/5



*Larry Clark, Los Angeles, 2006*  
37-1/2 by 30-7/10 inches (95.3 x 78 cm)  
C-print  
Edition 1/5



*Alicia Framis, Amsterdam, 2003*  
21 by 17 inches (53.3 x 43.2 cm)  
C-print  
Edition 3/5



*Georg Herold, Los Angeles, 2005*  
37-1/2 by 30-7/10 inches (95.3 x 78 cm)  
C-print  
Edition 2/5



*Mike Kelley, Los Angeles, 2006*  
21 by 17 inches (53.3 x 43.2 cm)  
C-print  
Edition 2/5



*Sarah Lucas, Suffolk, 2003*  
21 by 17 inches (53.3 x 43.2 cm)  
C-print  
Edition 2/5



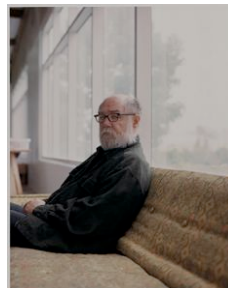
*Jonathan Meese, Mönchengladbach, 2003*  
37-1/2 by 30-7/10 inches (95.3 x 78 cm)  
C-print  
Edition 2/5



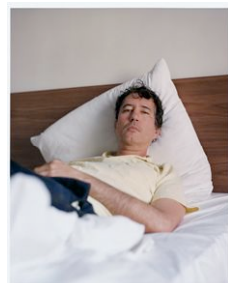
*Michel Majerus, Berlin, 1996*  
21 by 17 inches (53.3 x 43.2 cm)  
C-print  
Edition 3/5



*Paul McCarthy, Los Angeles, 2004*  
21 by 17 inches (53.3 x 43.2 cm)  
C-print  
Edition 3/5



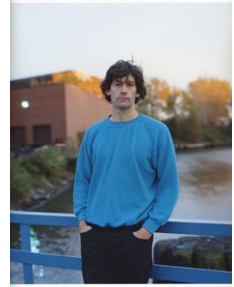
*Raymond Pettibon, Cologne I, 2001*  
21 by 17 inches (53.3 x 43.2 cm)  
C-print  
Edition 5/5



*Elizabeth Peyton, Cologne, 1996*  
37-1/2 by 30-7/10 inches (95.3 x 78 cm)  
C-print  
Edition 4/5



*Seth Price, New York, 2007*  
21 by 17 inches (53.3 x 43.2 cm)  
C-print  
Edition 1/5



*Steven Prina, Boston, 2007*  
21 by 17 inches (53.3 x 43.2 cm)  
C-print  
Edition 1/5



*Richard Prince, Cologne, 2006*  
21 by 17 inches (53.3 x 43.2 cm)  
C-print  
Edition 1/5



*John Pylypchuk, Los Angeles, 2004*  
21 by 17 inches (53.3 x 43.2 cm)  
C-print  
Edition 2/5



*Daniel Richter, Berlin, 2004*  
21 by 17 inches (53.3 x 43.2 cm)  
C-print  
Edition 2/5



*Ed Ruscha, Los Angeles, 2006*  
21 by 17 inches (53.3 x 43.2 cm)  
C-print  
Edition 2/5



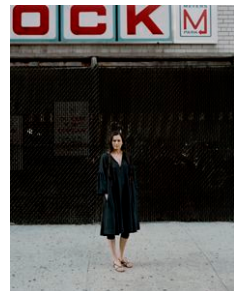
*Dana Schutz, New York, 2005*  
21 by 17 inches (53.3 x 43.2 cm)  
C-print  
Edition 1/5



*David Shrigley, Glasgow, 2006*  
21 by 17 inches (53.3 x 43.2 cm)  
C-print  
Edition 1/5



*Taryn Simon, New York, 2007*  
21 by 17 inches (53.3 x 43.2 cm)  
C-print  
Edition 1/5



*Wolfgang Tillmans, London II, 2001*  
20 by 12 inches (50.8 x 30.5cm)  
C-print  
Edition 2/5



*Uwe and Gert Tobias, Cologne, 2007*  
21 by 17 inches (53.3 x 43.2 cm)  
C-print  
Edition 1/5



*Luc Tuymans, Antwerp, 2007*  
21 by 17 inches (53.3 x 43.2 cm)  
C-print  
Edition 1/5



*Cosima von Bonin, Los Angeles, 2007*  
21 by 17 inches (53.3 x 43.2 cm)  
C-print  
Edition 1/5



*Lawrence Weiner, New York, 2005*  
37-1/2 by 30-7/10 inches (95.3 x 78 cm)  
C-print  
Edition 1/5



*Franz West, Vienna, 2003*  
21 by 17 inches (53.3 x 43.2 cm)  
C-print  
Edition 2/5



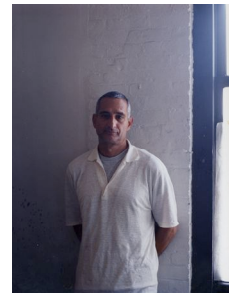
*T.J Wilcox, Orient, 2007*  
21 by 17 inches (53.3 x 43.2 cm)  
C-print  
Edition 1/5



*Christopher Williams, Los Angeles, 2004*  
21 by 17 inches (53.3 x 43.2 cm)  
C-print  
Edition 4/5



*Christopher Wool, New York, 2007*  
21 by 17 inches (53.3 x 43.2 cm)  
C-print  
Edition 1/5



**Martin Kippenberger: MK95**

*Martin Kippenberger, St. Georgen I, 1995*  
37-1/2 by 30-7/10 inches (95.3 x 78 cm)  
C-print  
Edition 4/5



*Martin Kippenberger, Dawson City I, 1995*  
37-1/2 by 30-7/10 inches (95.3 x 78 cm)  
C-print  
Edition 1/5



*Martin Kippenberger, Dawson City X (with horse), 1995*  
17 by 21 inches (43.2 x 53.3 cm)  
C-print  
Edition 2/5



*Martin Kippenberger, St. Georgen III (sitting from behind), 1995*  
17 by 21 inches (43.2 x 53.3 cm)  
C-print  
Edition 4/5



*Martin Kippenberger, Cologne I (bed), 1995*  
21 by 17 inches (53.3 x 43.2 cm)  
C-print  
Edition 4/5



*Martin Kippenberger, Dawson City VIII (Guggieville), 1995*  
21 by 17 inches (53.3 x 43.2 cm)  
C-print  
Edition 2/5



*Martin Kippenberger, Dawson City III (Pit Bar), 1995*  
17 by 21 inches (43.2 x 53.3 cm)  
C-print  
Edition 3/5

