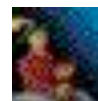


Mireille Mosler Ltd.

***Memento Mori***

December 1, 2006-February 3, 2007

Philip Akkerman  
*Self Portrait no. 120*, 2000  
Oil on masonite  
10<sup>5</sup>/<sub>8</sub> by 9<sup>7</sup>/<sub>8</sub> inches (27 by 25 cm.)



Philip Akkerman  
*Self Portrait no. 2*, 2001  
Oil on masonite  
10<sup>5</sup>/<sub>8</sub> by 9<sup>7</sup>/<sub>8</sub> inches (27 by 25 cm.)



D.-L. Alvarez  
*Funeral*, 2000  
Graphite on paper  
11<sup>5</sup>/<sub>8</sub> by 16<sup>1</sup>/<sub>2</sub> inches



John Armleder  
*Lubaantun*, 2002  
Unique wallpainting



John Armleder  
*Nutnaabul*, 2002  
Acrylic mirror  
45<sup>1</sup>/<sub>4</sub> by 39<sup>3</sup>/<sub>8</sub> inches (115 by 100 cm.)  
Edition 20/20



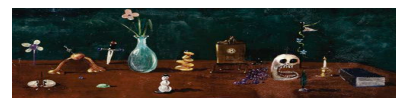
Rudolphe Bresdin (1822-1885)  
*Mother and Time*  
Pen and ink on paper  
Signed and dated 1857  
4<sup>3</sup>/<sub>4</sub> by 2<sup>7</sup>/<sub>8</sub> inches (12.2 by 7.2 cm.)



George Condo  
*Yorrick*, 1990  
Patinated Bronze  
8 by 10<sup>1</sup>/<sub>4</sub> by 7 inches (20 by 26 by 18 cm.)  
Edition 2/8



George Condo  
*Still life with Skull and Snowman*, 1992  
Oil and sand on canvas  
23 by 56 inches (58.5 by 142.5 cm.)



Jan van Dalen (circa 1611-1677)  
*A Vanitas Still Life with a Violin*  
Oil on panel  
26 1/4 by 37 1/2 inches (66.5 by 95 cm.)  
Signed and dated 1663



Eugene Delacroix (1798-1863)  
*Two Studies of a Lion's Skull*  
Pencil on paper  
8 by 12 1/4 inches (20.3 by 31.1 cm)  
Estate stamp bottom center: Lugt 838a



Paul Delvaux  
*La Squelette*  
Pen and ink on paper  
15 3/4 by 6 1/8 inches (40 by 15.6 cm)



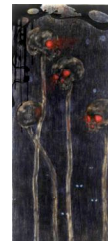
Don Doe  
*Thief*, 2003  
Watercolor, ink with colored pencil on paper  
15 by 11 1/4 inches (38.1 by 28.6 cm)



Iris van Dongen  
*Untitled*, 2005  
Pastel pencil and charcoal on paper  
16 1/4 by 11 3/8 (41 by 29 cm.)



Iris van Dongen  
*Compassion (skulls)*, 2006  
Pastel pencil and charcoal on paper  
82 by 41 inches (208.2 by 104.1 cm.)



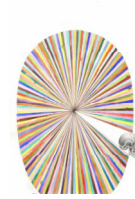
David Dupuis  
*Untitled*, 2006  
Color pencil, graphite and collage on paper  
5 1/2 by 7 1/2 inches (14 by 19 cm.)



David Dupuis  
*The Consumer #2*, 2001  
Color pencil and graphite on paper  
50 by 39 inches (127 by 99 cm.)



David Dupuis  
*Untitled (#406015)*, 2001  
Watercolor and graphite on paper  
24 by 18 inches (61 by 45.7 cm.)



David Dupuis  
*Untitled (#406013)*, 2001  
Ink and graphite on paper  
24 by 18 inches (61 by 45.7 cm.)



David Dupuis  
*It Rains on Our Love*, 2005  
Color pencil and graphite on paper  
7 1/2 by 5 1/2 inches (19.1 by 14 cm.)



David Dupuis  
*Untitled*, 2000  
Color pencil and graphite on paper  
7 1/2 by 5 1/2 inches (19.1 by 14 cm.)



David Dupuis  
*Untitled*, 2000  
Color pencil and graphite on paper  
7 1/2 by 5 1/2 inches (19.1 by 14 cm.)



David Dupuis  
*Untitled*, 2000  
Color pencil and graphite on paper  
7 1/2 by 5 1/2 inches (19.1 by 14 cm.)



Dutch school, *circa* 1650  
*Still life with Instruments and Deceased Child*  
Oil on canvas  
35 1/2 by 48 inches (90 by 122 cm.)



André Ethier  
*Untitled*, 2006  
Oil on masonite  
14 by 11 inches (35.6 by 28 cm.)



André Ethier  
*Untitled*, 2006  
Oil on masonite  
16 by 12 inches (40.7 by 30.5 cm.)



Franciscus Gijsbrechts (*circa* 1620-1680)  
*Vanitas Still Life*  
Oil on canvas  
30 by 22<sup>3</sup>/<sub>4</sub> inches (76 by 58 cm.)



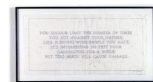
Damien Hirst  
*The Skull beneath the Skin*, 2006  
Silkscreen with Diamond dust  
39<sup>3</sup>/<sub>8</sub> by 26<sup>1</sup>/<sub>4</sub> inches (100 by 66.7 cm.)  
Edition 49/155



Damien Hirst  
*Arrested Development*, 2005  
Silver  
6 by 5 by 8 inches (15.2 by 12.7 by 20.3 cm.)  
Edition 4/25



Jenny Holzer  
*Under a Rock: An opposition man is chased through...*, 1986  
Pencil on tracing paper  
17<sup>1</sup>/<sub>4</sub> by 48 inches (43.8 by 121.9 cm.)



Robert Mapplethorpe  
*Skull Walking Cane*, 1988  
Gelatin silver print  
23 <sup>1</sup>/<sub>8</sub> by 19 <sup>5</sup>/<sub>16</sub> (59 by 49 cm.) image  
24 by 20 inches (61 by 51 cm.) paper  
Edition of 10 (AP 1/2)



Robert Morris  
*Untitled*  
Encaustic, lead, bronze  
39 by 46<sup>1</sup>/<sub>2</sub> inches (99 by 118 cm.)



Yoshitomo Nara  
*Two Dogs with Coffins*, 1993  
*Dog with Coffin*, 1993  
Acrylic on canvases  
23<sup>5</sup>/<sub>8</sub> by 23<sup>5</sup>/<sub>8</sub> inches (60 by 60 cm.) each



Bruce Nauman  
*Untitled*, 1990  
Etching  
16<sup>3</sup>/<sub>4</sub> by 19<sup>3</sup>/<sub>8</sub> inches (42.5 by 49.2 cm.)  
Edition 42/45. Signed



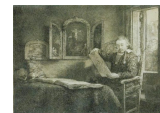
Arnulf Rainer  
*Mozart*, 1985  
Crayon on photograph  
23<sup>5</sup>/<sub>8</sub> by 19<sup>1</sup>/<sub>4</sub> inches (60 by 49 cm.)



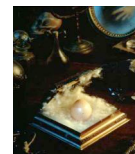
Arnulf Rainer  
*Mozart*, 1985  
Crayon on photograph  
23<sup>5</sup>/<sub>8</sub> by 19<sup>1</sup>/<sub>4</sub> inches (60 by 49 cm.)



Rembrandt van Rijn  
*Abraham Francen, Apothecary*, circa 1657  
Etching and drypoint on yellow Japan paper  
6<sup>3</sup>/<sub>8</sub> by 8<sup>1</sup>/<sub>8</sub> inches (160 by 207 mm.)



Cindy Sherman  
*Untitled*, 1992  
Color photograph  
40 by 26<sup>1</sup>/<sub>2</sub> inches (101.6 by 67.3 cm.)  
Edition 1/6



Haim Steinbach  
*Untitled (soap, mask)*, 1997  
MDF compound board shelf, 2 bars of 'Ivory' soap  
Plastic hockey mask  
17<sup>1</sup>/<sub>2</sub> by 30 by 17 inches (44 by 76 by 43 cm.)



Ricky Swallow  
*Archer/Too Far Gone*, 2006  
Water colour on paper  
12<sup>5</sup>/<sub>8</sub> by 9<sup>7</sup>/<sub>8</sub> inches (32 by 25 cm.)



Domenicus van Tol  
*Children at a Window blowing Bubbles*  
Oil on panel  
10<sup>5</sup>/<sub>8</sub> by 8<sup>1</sup>/<sub>2</sub> inches (27 by 21.5 cm.)



Rosemarie Trockel  
*Badlands*, 2006  
Mixed media  
26<sup>5</sup>/<sub>8</sub> by 22<sup>3</sup>/<sub>8</sub> by 1<sup>1</sup>/<sub>2</sub> inches (67.5 by 57 by 3.8 cm.) (corpus)  
35<sup>1</sup>/<sub>2</sub> by 22<sup>3</sup>/<sub>8</sub> by 1<sup>1</sup>/<sub>2</sub> inches (90 by 57 by 3.8 cm.) (overall)



Jan Vermeulen (active *circa* 1652-after1661)  
*A Vanitas Still Life with a Violin*  
Oil on panel  
19 1/4 by 25 5/8 inches (49 by 65.1 cm.)



Jan Vermeulen (active *circa* 1652-after1661)  
*A Vanitas Still Life*  
Oil on panel  
Signed  
27 1/2 by 22 1/4 inches (69.3 by 56.9 cm.)



Vincent Laurensz van der Vinne (1629-1702)  
*A Vanitas Still Life with a Crown*  
Oil on panel  
Signed  
15 1/4 by 14 inches (38.8 by 35.5 cm.)



Andy Warhol  
*Electric Chair*, no. 76  
Screenprint on paper  
35 1/2 by 48 inches (90.2 by 122 cm.)  
Edition 80/250



Andy Warhol  
*Anatomical Models*, 1984  
Silver gelatin print on paper  
8 by 10 inches (20.3 by 25.4 cm.)



Jon Widman  
*Untitled*, (skull) 2004  
Watercolor on paper  
28 by 22 inches (71.1 by 55.9 cm.)



Jon Widman  
*Spiderface*, 2005  
Watercolor on paper  
11 1/4 by 15 1/4 inches (28.1 by 38.7 cm.)



Jon Widman  
*The Order of Death*, 2006  
Paper  
11 1/4 by 15 1/4 inches (28.1 by 38.7 cm.)

